



| Kingswood, Albrighton | Wolverhampton | WV7 3AJ

£1,300 Per month

Jackson
LILE & CLOSE

Key features

Description

Ground Floor:

Hall Entrance

Lounge

Sitting Room

Kitchen

Utility

Conservatory

Rear hall having w.c. off

Bathroom having corner bath, separate shower cubicle, wash hand basin

First Floor

Two bedrooms both having fitted wardrobes

Outside:

Attractive gardens.

Garage

Directions

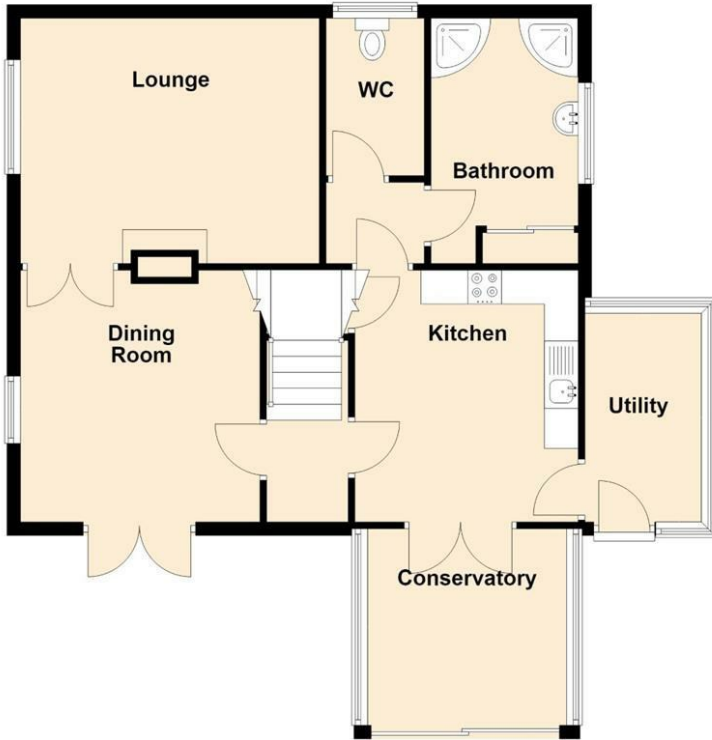




Floor plans

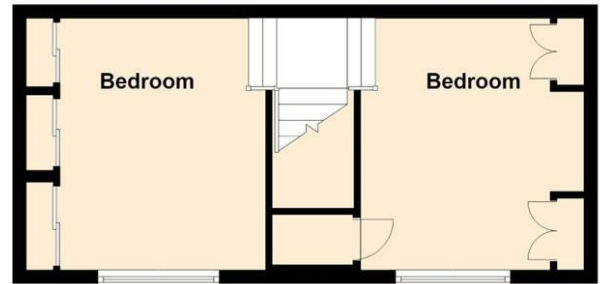
Ground Floor

Approx. 76.2 sq. metres (820.1 sq. feet)



First Floor

Approx. 30.8 sq. metres (331.7 sq. feet)



Total area: approx. 107.0 sq. metres (1151.7 sq. feet)

Energy Efficiency Rating		
	Current	Potential
<i>Very energy efficient - lower running costs</i>		
(92 plus) A		
(81-91) B		
(69-80) C		
(55-68) D		64
(39-54) E	48	
(21-38) F		
(1-20) G		
<i>Not energy efficient - higher running costs</i>		
England & Wales	EU Directive 2002/91/EC	

Jackson
LILE & CLOSE

12 and 13 King Street
Wolverhampton
West Midlands
WV1 1ST
01902 712812

jacksonlileclose@btconnect.com
<https://www.jacksonlileandclose.co.uk/#/>